



FANCY PACKS FOR THE SWEETS PANTRY MODELLING WORKBOOK

Your name: _____

Your Group members:

1. _____

2. _____

3. _____

4. _____

Group Number: _____

Class: _____

1. Imagine you have to choose a pack of sweets from a display stand. There are many different colourful packs to choose from. What *four things* would you look for? List them in order, from the *most important* to the *least important*.

a. _____

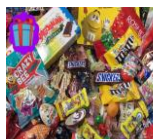
b. _____

c. _____

d. _____

2. Explain how you decided:





MAKE YOUR SELECTIONS...
HELP THE SWEETS PANTRY



A new sweets store, the *Sweets Pantry*, has opened in your neighbourhood. It needs your help in filling some mysterious orders it has received from neighbourhood children. They did not say exactly what they wanted, and not all children wanted the same packs of sweets and not all children had the same amount of money to spend. Here is one order the *Sweets Pantry* received:

Dear Sweets Pantry,

We would like to purchase some packs of sweets but we are unsure which to choose. Can you please help us?

- *We are taking the sweets on a school trip.*
- *We wish to impress our friends on the trip.*
- *We do not want to spend more than \$50 and we want value for money.*
- *We would like to buy at least 400 grams of sweets.*

Here is what the *Sweets Pantry* has to offer the children. In your group, use the table to create a model or way in which the *Sweets Pantry* could fill this order and use your model to decide which sweets packs your group would select. Record the packs you choose on page 5. The *Sweets Pantry* should be able to use your model to fill other similar mysterious orders.

Sweets Packs sold at the Sweets Pantry

<i>Sweets</i>	<i>Cost</i>	<i>Materials</i>	<i>Packaging Type</i>	<i>Weight (grams)</i>	<i>Package Decorations</i>
Chocolate Drops	\$7.50	Tissue and cellophane	Carry bag	60	Purple and pink ribbons
Chocolate Twists	\$17.50	Cardboard	Rectangular box	75	Sparkles
M&Ms	\$8.00	Metal	Round tin	80	Stars and spots
Marshmallow Twists	\$4.00	Metallic tissue paper	Carry bag	30	Stripes
Rock Candy Bites	\$12.50	Vinyl	Soft vinyl bags	110	Floral top black ribbon
Crazy Twirls	\$8.50	Paper	Twisted handle bag	60	Bright pink dots
Candy Crinkles	\$6.00	Cardboard, Plastic	Rectangular box with clear plastic display	80	Christmas tree drawings
Lollipops	\$5.00	Plastic	Clear rectangular box	90	Flower on top and blue ribbon



3. Use this page to make a record of the sweets packs your group chooses. Include all your working on this page.



Letter to the Sweets Pantry

4. You are to write a letter to the Sweets Pantry explaining your model.

Dear Sweets Pantry,

We have come up with a model that you can use to complete the orders. Here is what you can do:

